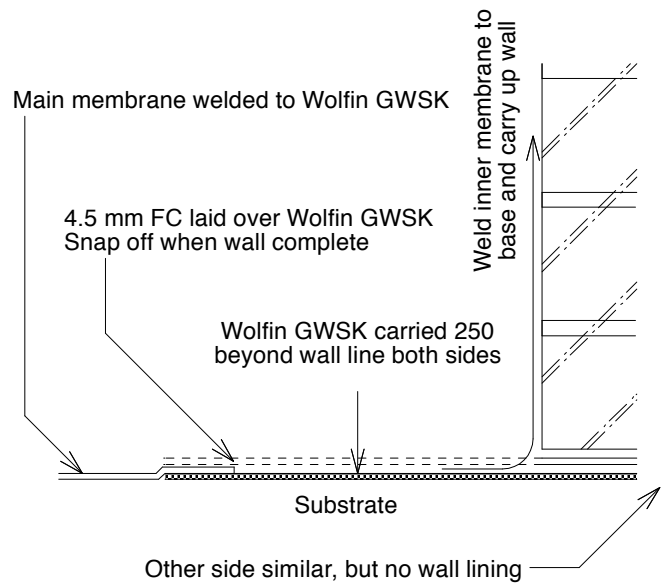


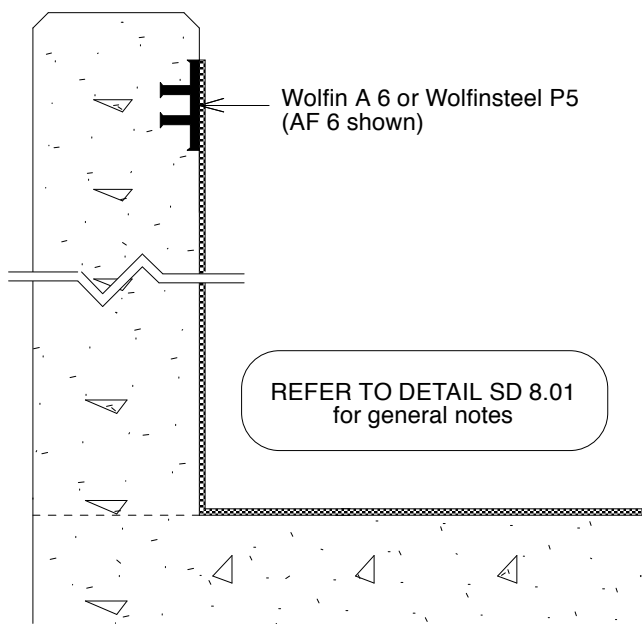
TYPICAL ISOLATED OR RETROFIT
PLANTER OR GARDEN BED
Note: There is usually no P 2 base angle

DETAIL SD 8.01



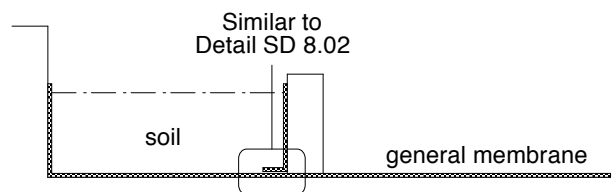
TYPICAL WHERE MAIN MEMBRANE CARRIES
INTO PLANTER OR GARDEN BED
Note: if wall is less than 230 wide and/or less
than 1 metre high, refer to WMA for advice.
Refer also to Detail SD 8.01

DETAIL SD 8.02

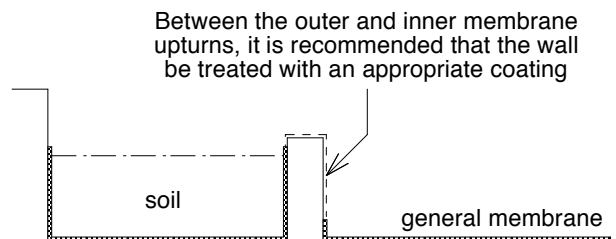


TYPICAL AT CONCRETE PLANTER WALL
(Perimeter shown)

DETAIL SD 8.03



New or rebuilt masonry planter dividing wall



Existing (or concrete) planter dividing wall

TYPICAL PLANTER WALL GENERAL SECTIONS
Refer also to Details SD 8.01 and 8.03

DETAIL SD 8.04

This drawing is intended to show basic principles and set minimum standards. Any variation in site conditions is to be referred to WMA for approval of the required detail. The thickness scale on this drawing is exaggerated for clarity.

COMMENTS / ASSOCIATED DRAWINGS
Wherever possible, the membrane wall terminations are to be a minimum of 100 mm above the nominal soil line

© WOLFEN MEMBRANES AUSTRALIA PTY LTD

Standard Guide Details

Typical Planters / Gardens
Details SD 8.01 to 8.04

Scale: 1 : 5

Date: Jan 2010

Dwg No: **SD - 8**