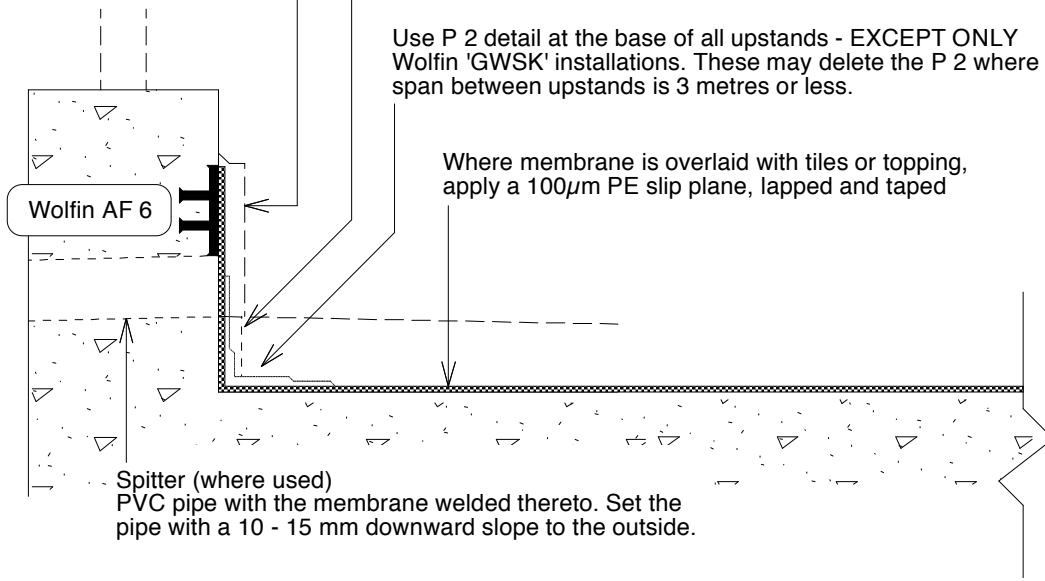


Wherever possible set "pond" height 100 above the finished surface. It is recommended that the upstand be protected from mechanical damage by a tile skirting, metal overflashing or similar.

Where membrane is overlaid with tiles or concrete topping, the membrane applicator is to bond abefflex to the upstand

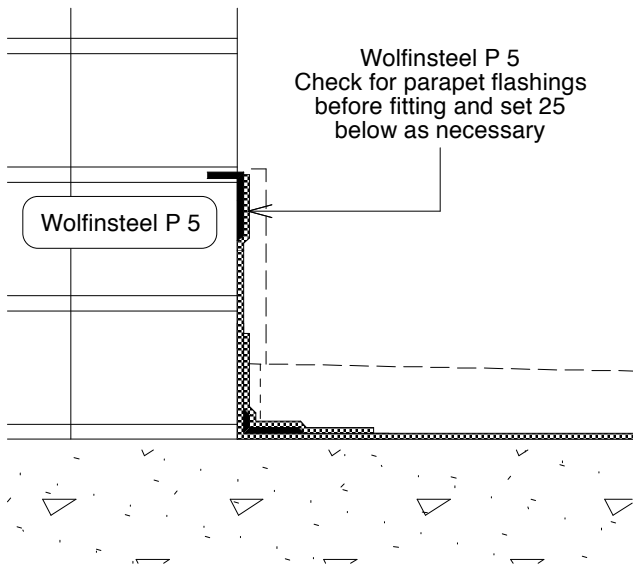
Use P 2 detail at the base of all upstands - EXCEPT ONLY Wolfin 'GWSK' installations. These may delete the P 2 where the span between upstands is 3 metres or less.

Where membrane is overlaid with tiles or topping, apply a 100µm PE slip plane, lapped and taped



CONCRETE DECK AND EDGE KERB (AF 6 shown)  
and General Notes

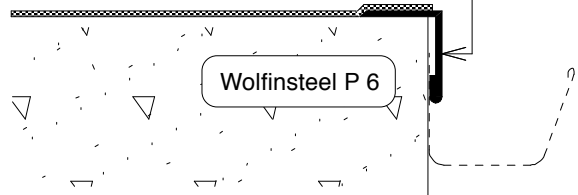
DETAIL SD - 1.01



TYPICAL at MASONRY PARAPETS  
Refer detail 1.01 for general notes

DETAIL SD - 1.02

Wolfinsteel P 6 planted on butyl tape.  
If the environment is marine or aggressive, use Stainless Wolfinsteel.  
Where gutters occur, clamp the Wolfinsteel over the gutter.



TYPICAL at FREE EDGE OF SLAB  
Refer detail 1.01 for general notes

DETAIL SD - 1.03

This drawing is intended to show basic principles and set minimum standards. Any variation in site conditions is to be referred to WMA for approval of the required detail. The thickness scale on this drawing is exaggerated for clarity.

COMMENTS / ASSOCIATED DRAWINGS

1. Profile Construction details: refer dwg WSD - 1, 3 & 4.
2. Spitter Construction details: refer dwg WS 1

© WOLFIN MEMBRANES AUSTRALIA PTY LTD

Standard Guide Details

Typical Terminations  
Concrete Decks  
Details SD 1.01, 1.02 and 1.03

Scale: 1: 5

Date: Jan 2010

Dwg No: **SD - 1**

