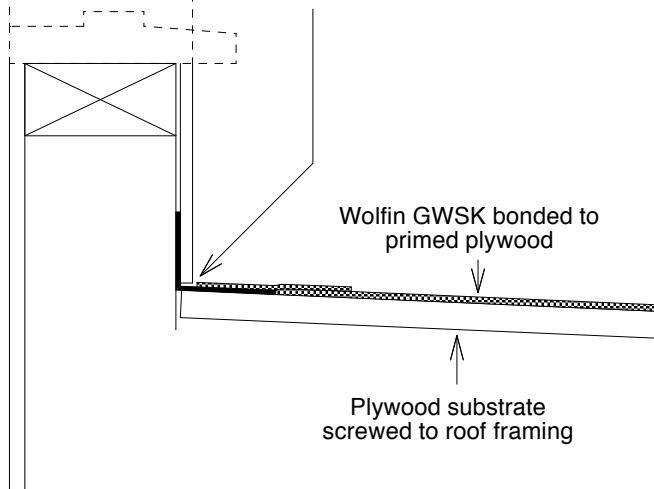


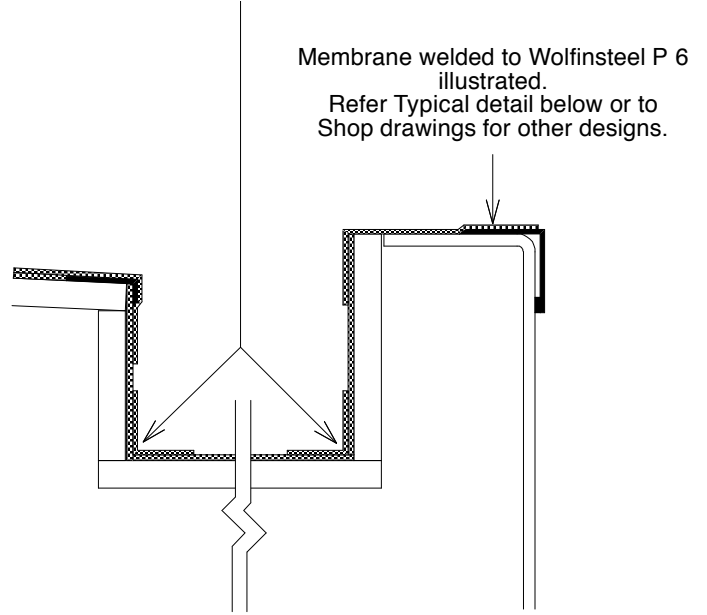
80 x 70 Wolfinsteel bent to suit included angle, screwed to plywood and set hard against framework. Protect the horizontal face with gaffer tape. Remove tape after the cladding and painting complete, then weld to Wolfin GWSK as shown.



TYPICAL SHEETED WALL CONNECTION

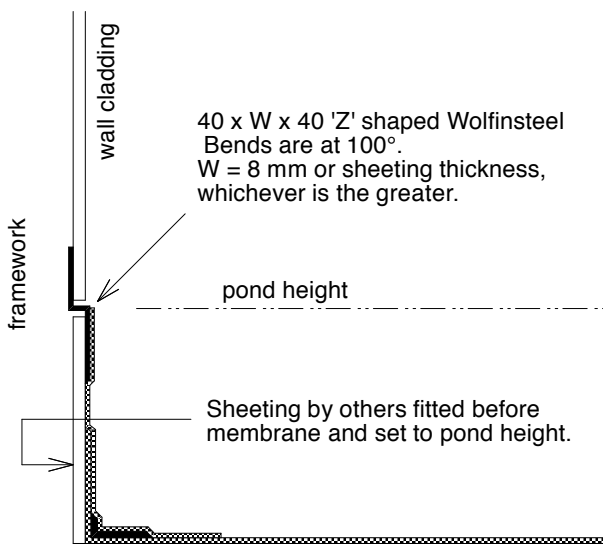
DETAIL SD 5.01

Line gutter with Wolfin GWSK and join with Wolfin IB welding strips. If gutter greater than 500 wide, use Wolfinsteel P 2 at base.



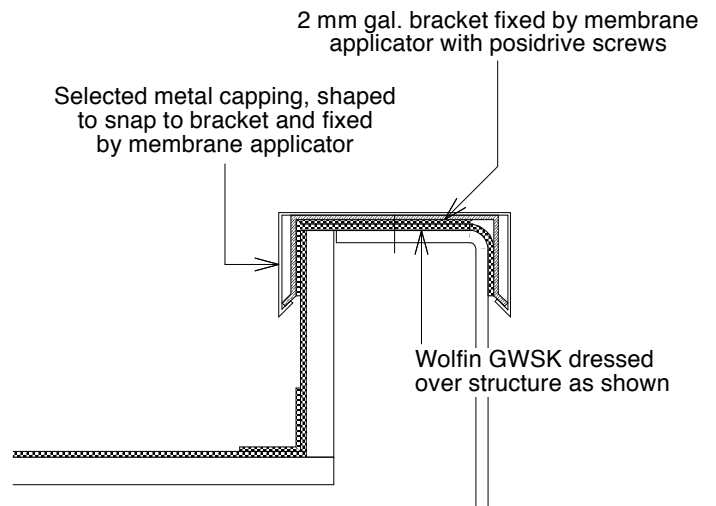
TYPICAL PLYWOOD GUTTER and WOLFINSTEEL CAPPING

DETAIL SD 5.02



TYPICAL DETAIL AT PARAPETS

DETAIL SD 5.03



TYPICAL DETAIL - METAL CAPPINGS (Where used)

DETAIL SD 5.04

This drawing is intended to show basic principles and set minimum standards. Any variation in site conditions is to be referred to WMA for approval of the required detail. The thickness scale on this drawing is exaggerated for clarity.

COMMENTS / ASSOCIATED DRAWINGS

1. Substrate: structural grade plywood ('A' glue bond) is generally recommended. CFC or marine ply can be used

© WOLFIN MEMBRANES AUSTRALIA PTY LTD

Standard Guide Details

Typical Terminations
Plywood Decks
Details 5.01 to 5.04

Scale: 1 : 5

Date: Jan 2010

Dwg No: **SD - 5**