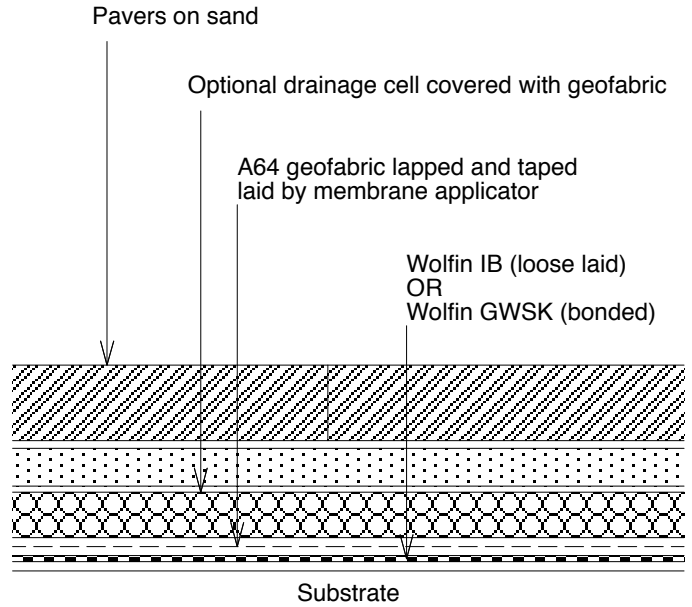


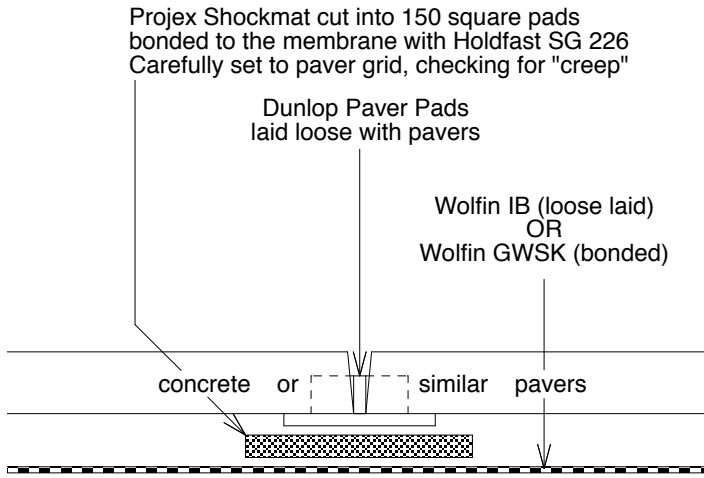
TYPICAL LAYUP  
BEDDED TILE / PAVERS

DETAIL SD 6.01



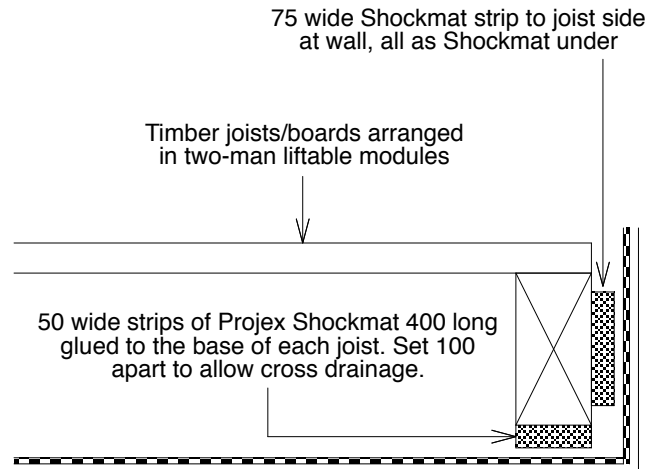
TYPICAL LAYUP  
PAVERS ON SAND BED

DETAIL SD 6.02



TYPICAL LAYUP  
PAD SUPPORTED PAVERS

DETAIL SD 6.03



NOTE  
The timber modules are not to be built within the membrane area

TYPICAL LAYUP  
TIMBER DECKS ON MEMBRANE

DETAIL SD 6.04

This drawing is intended to show basic principles and set minimum standards. Any variation in site conditions is to be referred to WMA for approval of the required detail. The thickness scale on this drawing is exaggerated for clarity.

COMMENTS / ASSOCIATED DRAWINGS  
1. Substrate can be any construction material  
2. Tiling / pavers must be expansion jointed correctly

© WOLFIN MEMBRANES AUSTRALIA PTY LTD

Standard Guide Details

Typical Surfacing Materials  
Details 6.01 to 6.04

Scale: 1: 5

Date: Jan 2010

Dwg No: **SD - 6B**